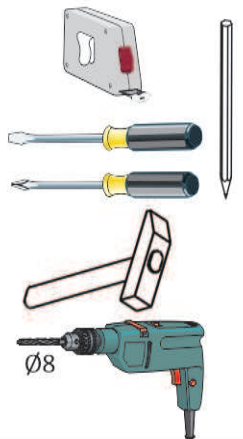


Model: **LOFTIA WITRYNA 40 1D**

1/5

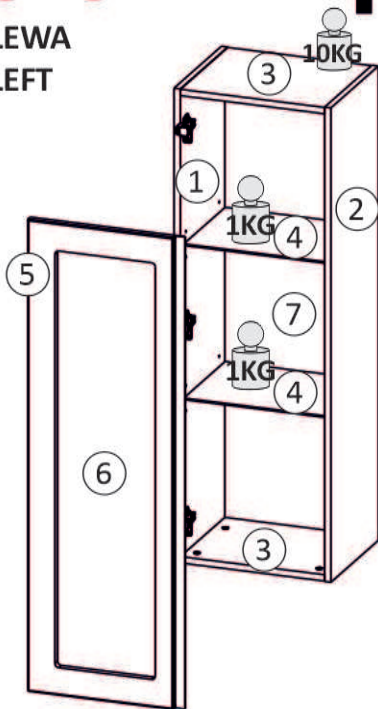
Do montażu potrzebne są:
Für die Montage dieser Type benötigen Sie:

Na montáž budete potrebovať
Potřebné k montáži

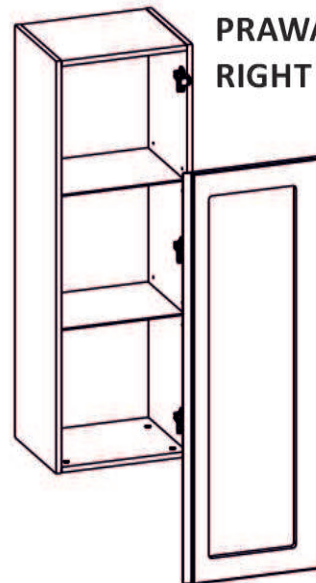


BOGART.

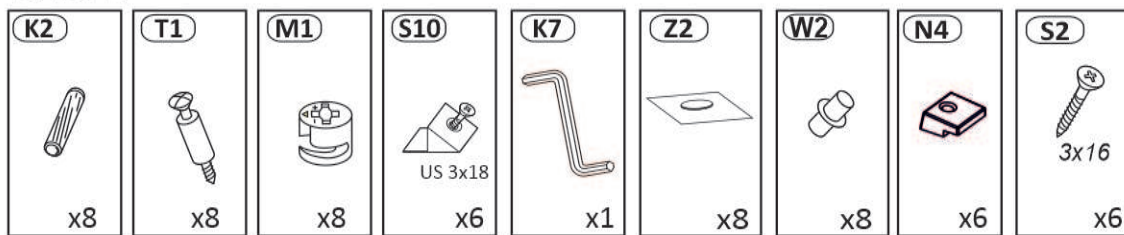
LEWA
LEFT



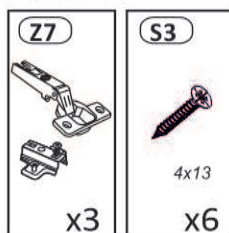
PRAWA
RIGHT



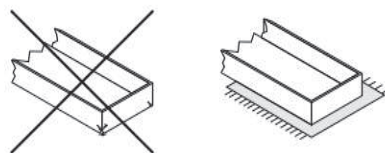
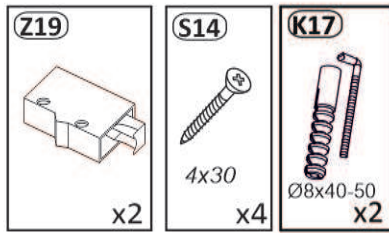
BAG 1



BAG 2



BAG 3



Proszę montować mebel na kartonie!
Bitte das Möbel auf der Verpackung montieren.

PL Instrukcja montażowa
D Montageanleitung
GB Assembly instructions
SK Návod na montáž
CZ Návod k montáži

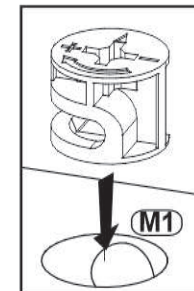
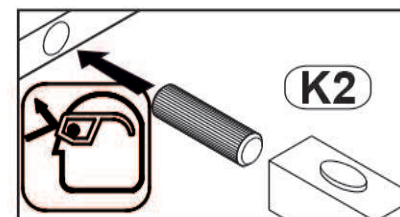
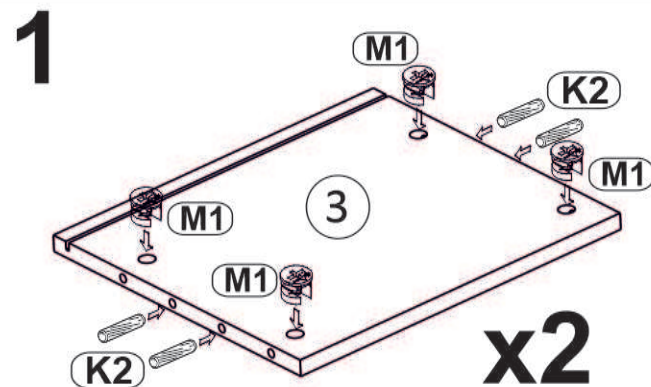
D Sehr geehrter Kunde, sollte ein Teil fehlen oder beschädigt sein, kreuzen Sie bitte dieses deutlich auf der Montageanleitung an und schicken Sie zu uns ab.

GB Dear customer, Should there be any place missing or damaged, kindly mark this place clearly on the attached assembly instructions and return it to us.

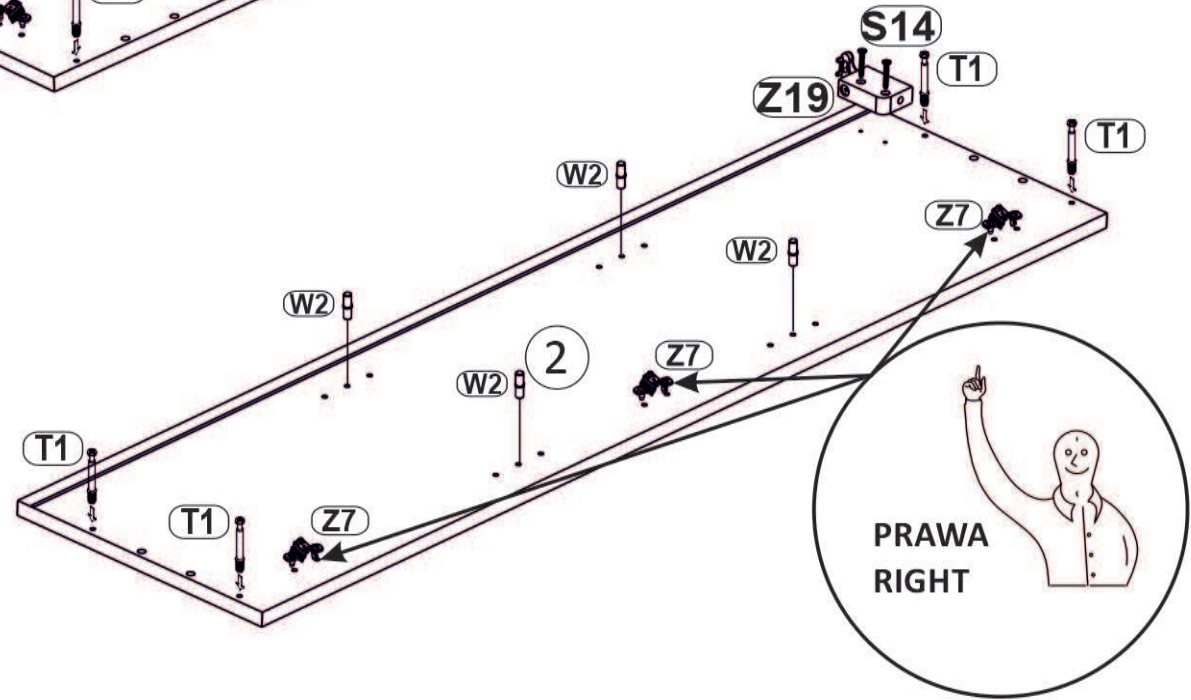
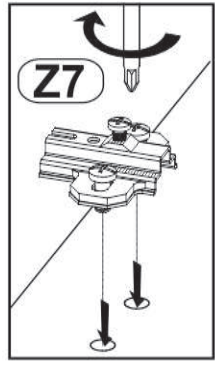
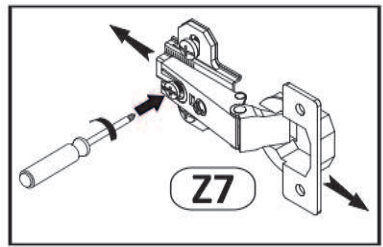
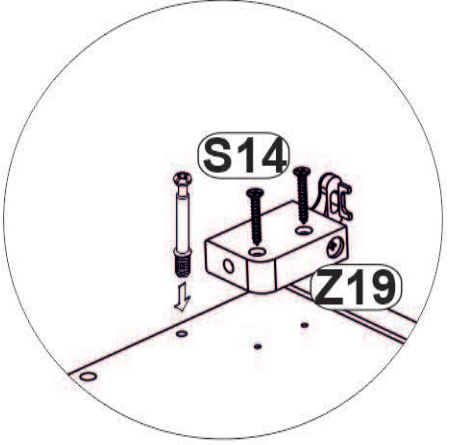
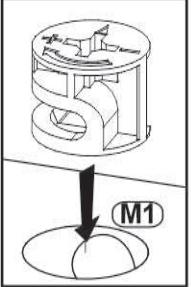
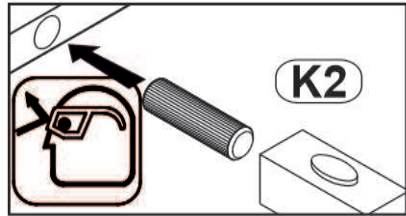
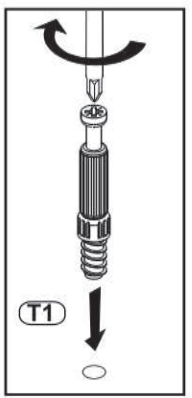
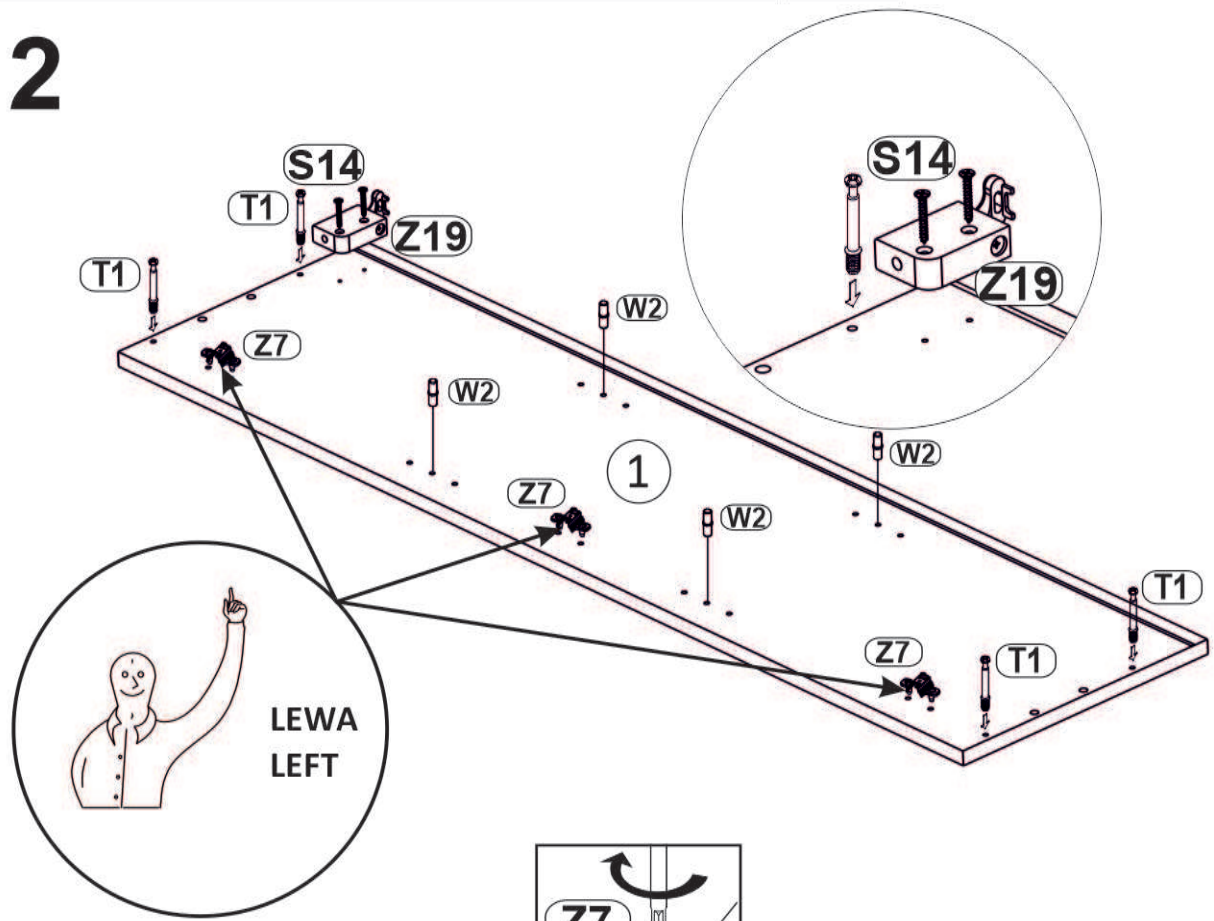
PL Szanowny Kliencie, gdyby brakowało jakiejś części lub byłaby uszkodzona proszę to oznaczyć krzyżykiem na instrukcji montażowej i przesłać instrukcję razem z reklamacją.

SK Vážení zákazník, keby chýbala nejaká časť, alebo by bola poškodená, označte ju prosím krížikom na montážnom návode a zašlite návod spolu s reklamáciou.

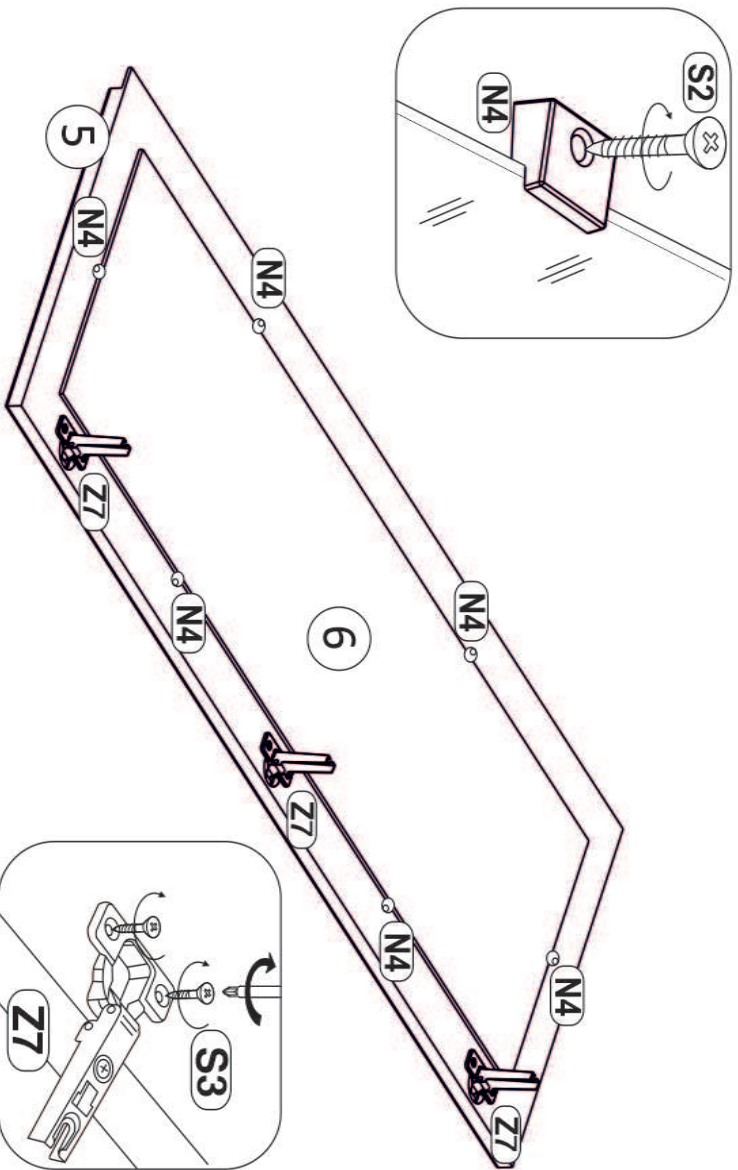
CZ Vážení zákazník, kdyby chyběla nějaká část nebo byla poškozená, označte ji prosím křížkem na montážním návodu a zašlete návod spolu s reklamací.



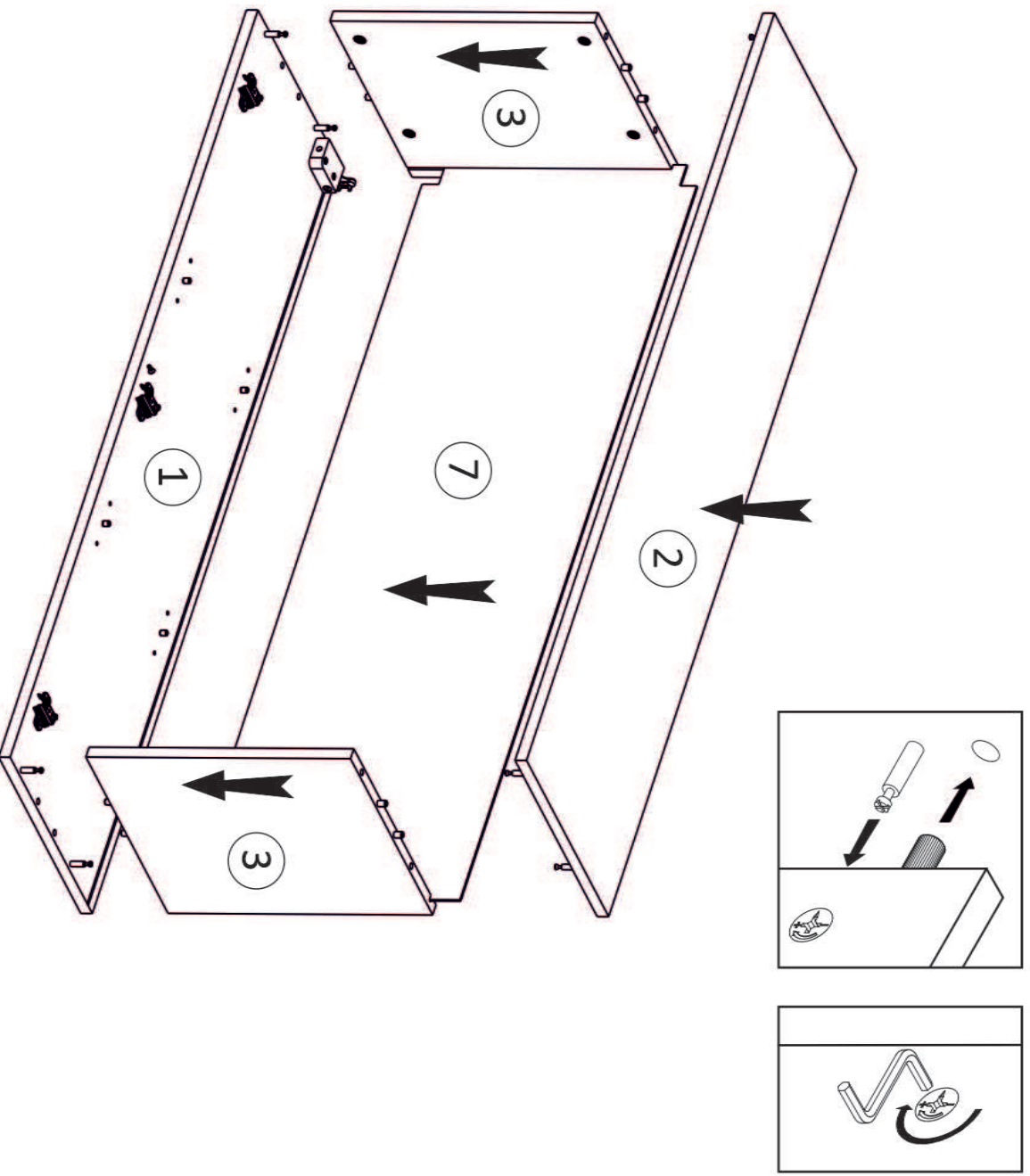
2



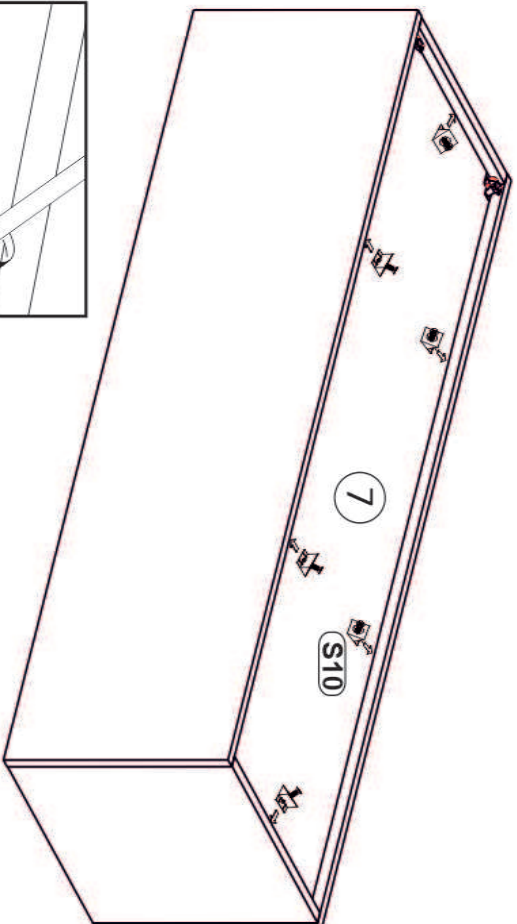
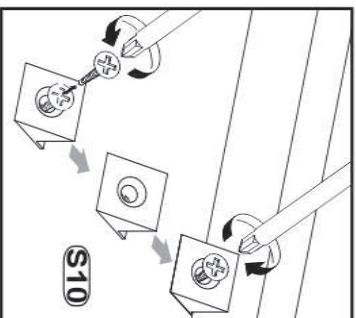
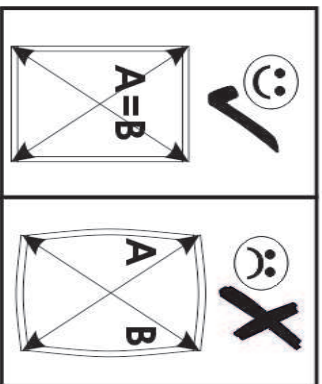
3



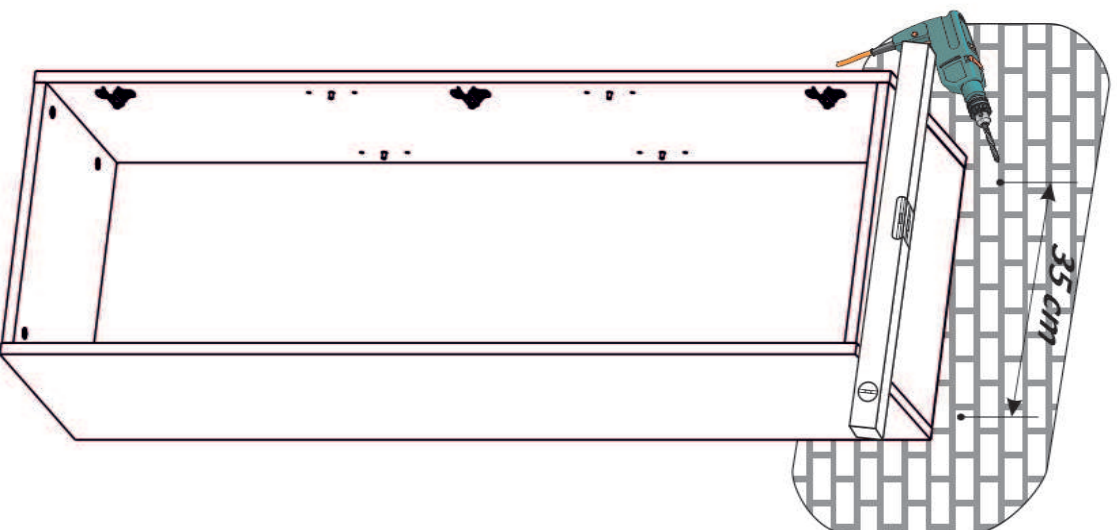
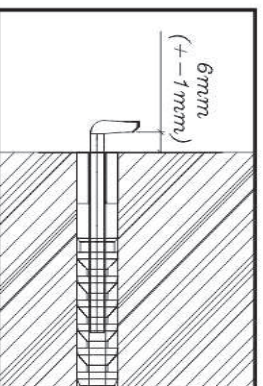
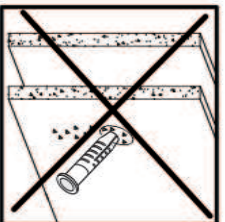
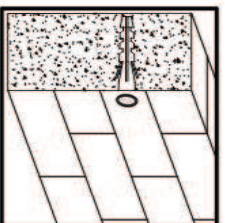
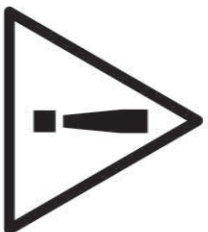
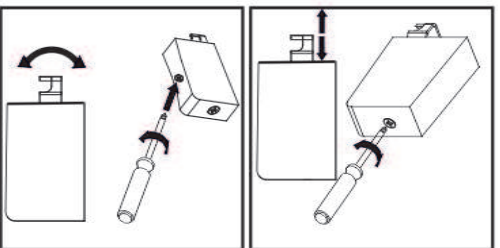
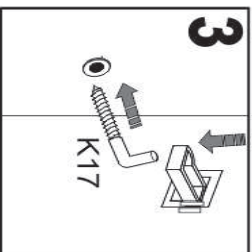
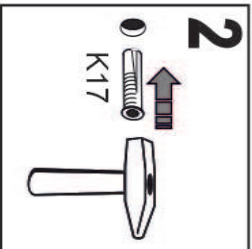
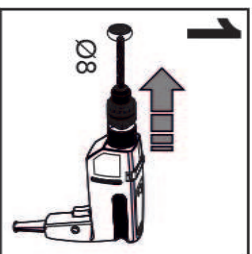
4



5

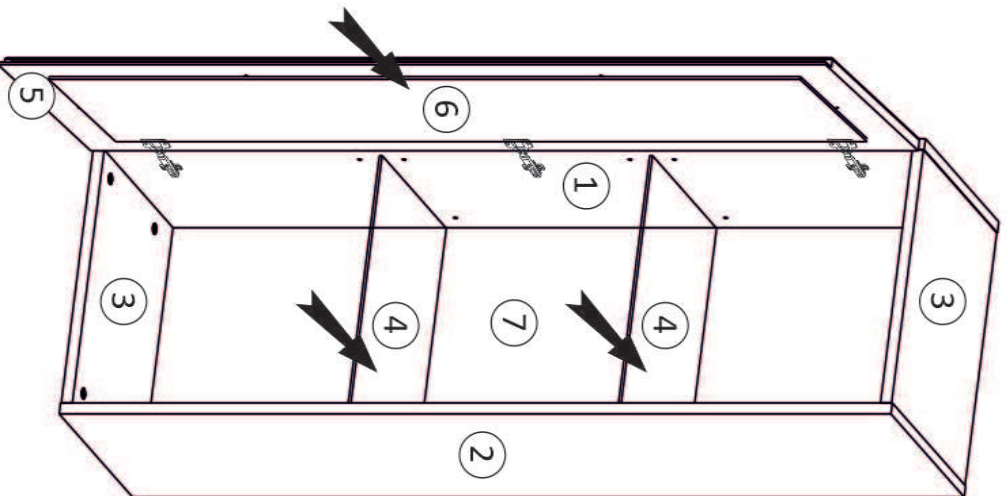


6



7

LEWA
LEFT



PRAWA
RIGHT

